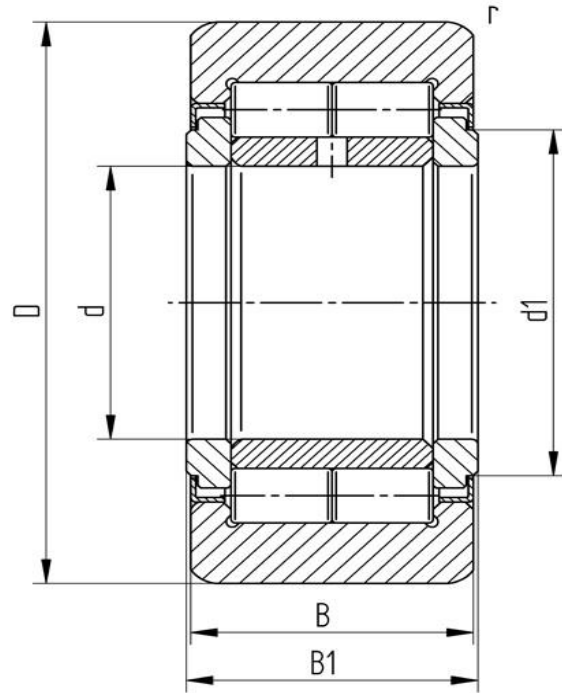


Data sheet
Support roller NUTR 35 (crowned, with axial guidance, labyrinth seal)

Designation	NUTR 35
Type	crowned
D [mm]	72
d [mm]	35
d1 [mm max.]	44
B1 [mm]	29
B [mm]	28
r [mm]	1,1
r1 [mm]	0,6
Dynamic load Crw[N]	45000
Static load	61000
Speed limit [min-1]	2100



Every specification has been edited and verified carefully. STI Bearings GmbH assumes no liability for potential errors or incompleteness. Technical modifications are subject of changes.
 © 2020 by STI Bearings GmbH
 Reproduction, even excerpts, only with our approval.