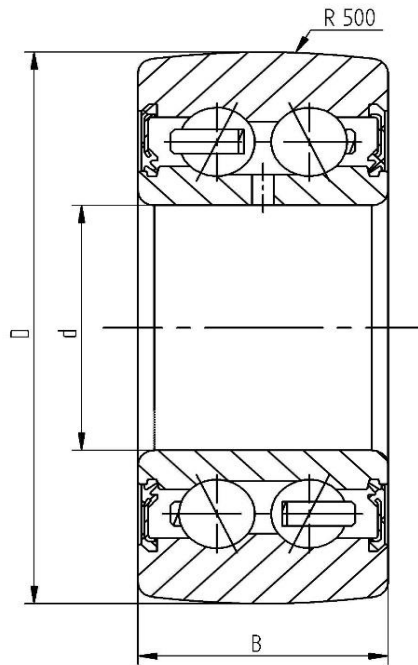


Data sheet - Cam Roller LR5308-2RS (crowned, with seal)

Designation	LR5308-2RS
D [mm]	100
d [mm]	40
B [mm]	36,5
r [mm]	1,5
Dynamic load Crw [N]	54000
Static load C0rw [N]	40500
Speed limit [min ⁻¹]	2300



Every specification has been edited and verified carefully. STI Bearings GmbH assumes no liability for potential errors or incompleteness. Technical modifications are subject of changes.
© 2020 by STI Bearings GmbH
Reproduction, even excerpts, only with our approval.