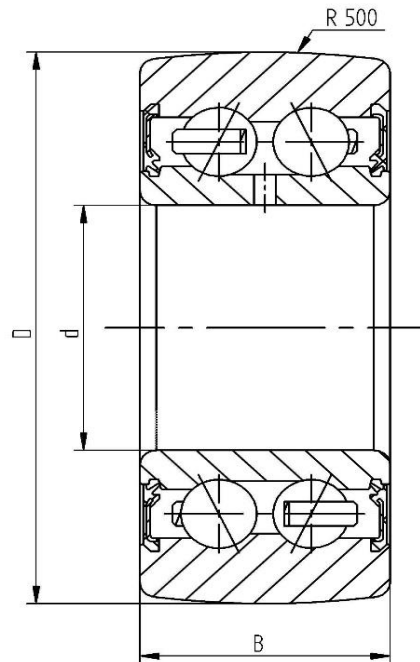


Data sheet - Cam Roller LR5307-2RS (crowned, with seal)

Designation	LR5307-2RS
D [mm]	90
d [mm]	35
B [mm]	34,9
r [mm]	1,5
Dynamic load Crw [N]	44000
Static load C0rw [N]	32500
Speed limit [min-1]	2500



Every specification has been edited and verified carefully. STI Bearings GmbH assumes no liability for potential errors or incompleteness. Technical modifications are subject of changes.
© 2020 by STI Bearings GmbH
Reproduction, even excerpts, only with our approval.