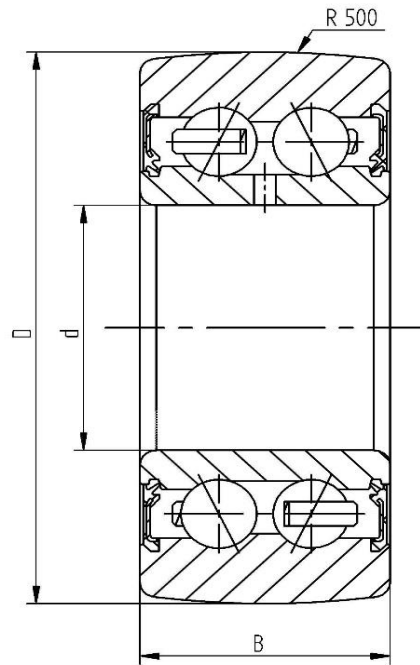


Data sheet - Cam Roller LR5306-2RS (crowned, with seal)

Designation	LR5306-2RS
D [mm]	80
d [mm]	30
B [mm]	30,2
r [mm]	1,1
Dynamic load Crw [N]	35500
Static load C0rw [N]	25500
Speed limit [min ⁻¹]	3100



Every specification has been edited and verified carefully. STI Bearings GmbH assumes no liability for potential errors or incompleteness. Technical modifications are subject of changes.
© 2020 by STI Bearings GmbH
Reproduction, even excerpts, only with our approval.