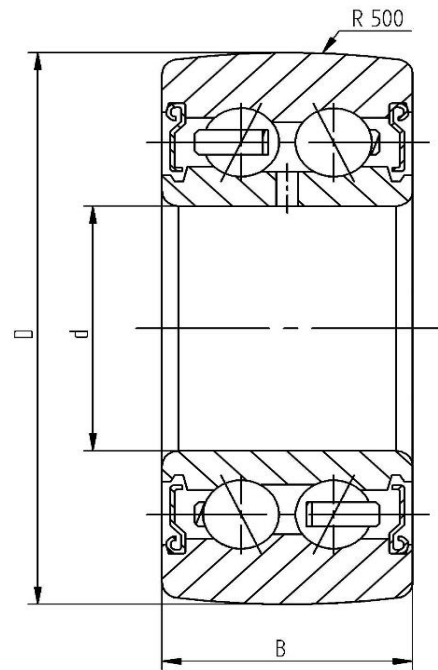


**Data sheet - Cam Roller LR5305-2Z (crowned, with shield)**

| <b>Designation</b>   | <b>LR5305-2Z</b> |
|----------------------|------------------|
| D [mm]               | 72               |
| d [mm]               | 25               |
| B [mm]               | 25,4             |
| r [mm]               | 1,1              |
| Dynamic load Crw [N] | 28000            |
| Static load C0rw [N] | 19900            |
| Speed limit [min-1]  | 5500             |



Every specification has been edited and verified carefully. STI Bearings GmbH assumes no liability for potential errors or incompleteness. Technical modifications are subject of changes.  
© 2020 by STI Bearings GmbH  
Reproduction, even excerpts, only with our approval.