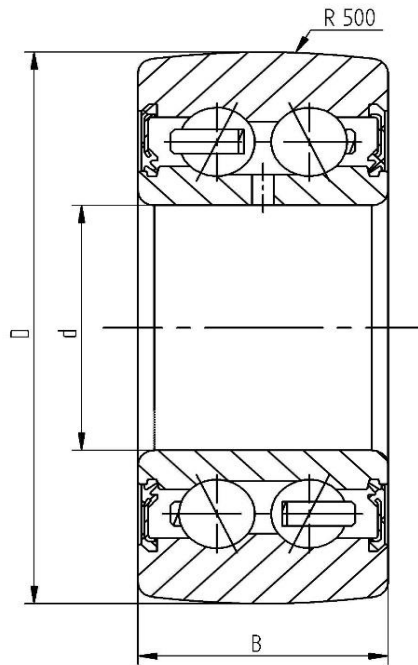


**Data sheet - Cam Roller LR5305-2RS (crowned, with seal)**

Designation	LR5305-2RS
D [mm]	72
d [mm]	25
B [mm]	25,4
r [mm]	1,1
Dynamic load Crw [N]	28000
Static load C0rw [N]	19900
Speed limit [min-1]	3900



Every specification has been edited and verified carefully. STI Bearings GmbH assumes no liability for potential errors or incompleteness. Technical modifications are subject of changes.  
© 2020 by STI Bearings GmbH  
Reproduction, even excerpts, only with our approval.