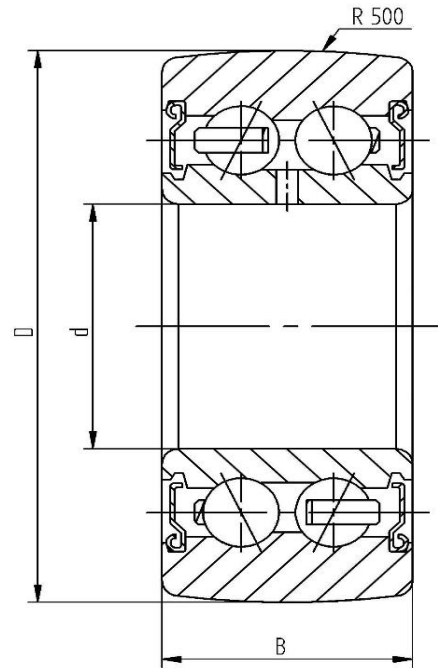


**Data sheet - Cam Roller LR5201-2Z (crowned, with shield)**

<b>Designation</b>	<b>LR5201-2Z</b>
D [mm]	35
d [mm]	12
B [mm]	15,9
r [mm]	0,6
Dynamic load Crw [N]	8700
Static load C0rw [N]	5200
Speed limit [min <sup>-1</sup> ]	10000



Every specification has been edited and verified carefully. STI Bearings GmbH assumes no liability for potential errors or incompleteness. Technical modifications are subject of changes.  
© 2020 by STI Bearings GmbH  
Reproduction, even excerpts, only with our approval.