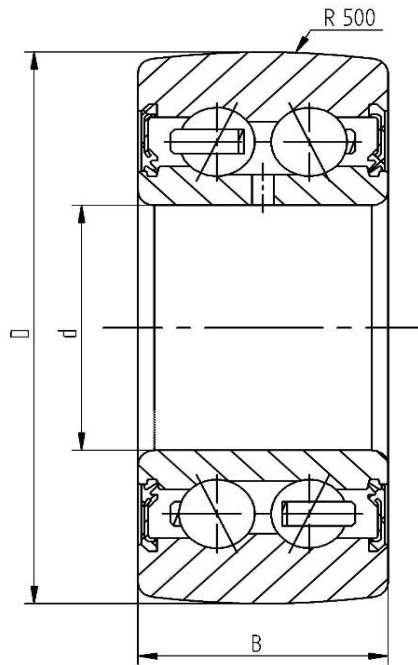


**Data sheet - Cam Roller LR5007-2RS (crowned, with seal)**

<b>Designation</b>	<b>LR5007-2RS</b>
D [mm]	68
d [mm]	35
B [mm]	20
r [mm]	1
Dynamic load Crw [N]	17800
Static load C0rw [N]	13300
Speed limit [min <sup>-1</sup> ]	4300



Every specification has been edited and verified carefully. STI Bearings GmbH assumes no liability for potential errors or incompleteness. Technical modifications are subject of changes.  
© 2020 by STI Bearings GmbH  
Reproduction, even excerpts, only with our approval.