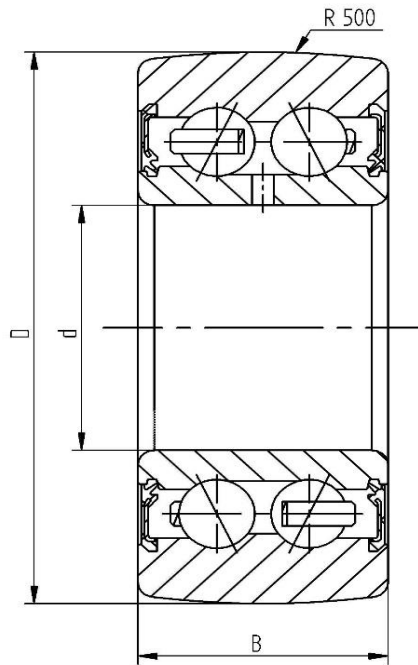


Data sheet - Cam Roller LR5003-2RS (crowned, with seal)

Designation	LR5003-2RS
D [mm]	40
d [mm]	17
B [mm]	14
r [mm]	0,3
Dynamic load Crw [N]	7800
Static load C0rw [N]	5300
Speed limit [min ⁻¹]	6000



Every specification has been edited and verified carefully. STI Bearings GmbH assumes no liability for potential errors or incompleteness. Technical modifications are subject of changes.
© 2020 by STI Bearings GmbH
Reproduction, even excerpts, only with our approval.