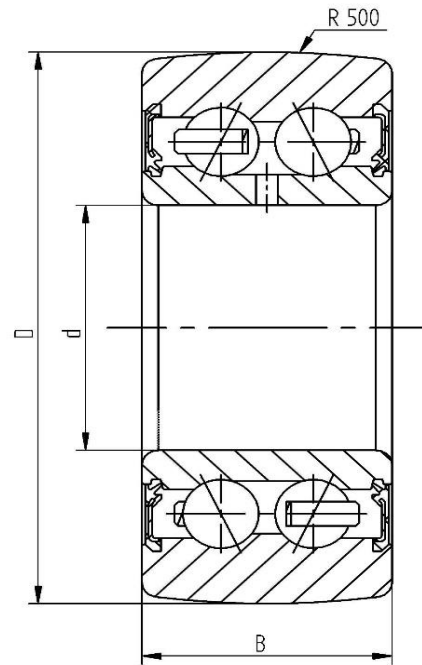


## Data sheet - Cam Roller LR5002-2RS (crowned, with seal)

Designation	LR5002-2RS
D [mm]	35
d [mm]	15
B [mm]	13
r [mm]	0,3
Dynamic load Crw [N]	6500
Static load C0rw [N]	4150
Speed limit [min-1]	7000



Every specification has been edited and verified carefully. STI Bearings GmbH assumes no liability for potential errors or incompleteness. Technical modifications are subject of changes.  
 © 2020 by STI Bearings GmbH  
 Reproduction, even excerpts, only with our approval.