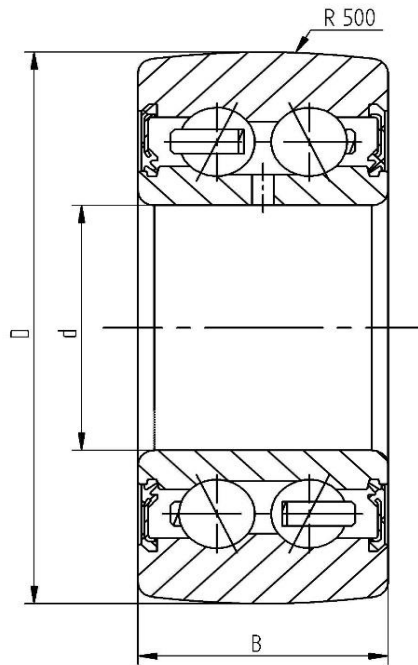


**Data sheet - Cam Roller LR5001-2RS (crowned, with seal)**

Designation	LR5001-2RS
D [mm]	30
d [mm]	12
B [mm]	12
r [mm]	0,3
Dynamic load Crw [N]	5100
Static load C0rw [N]	3100
Speed limit [min-1]	8500



Every specification has been edited and verified carefully. STI Bearings GmbH assumes no liability for potential errors or incompleteness. Technical modifications are subject of changes.  
© 2020 by STI Bearings GmbH  
Reproduction, even excerpts, only with our approval.