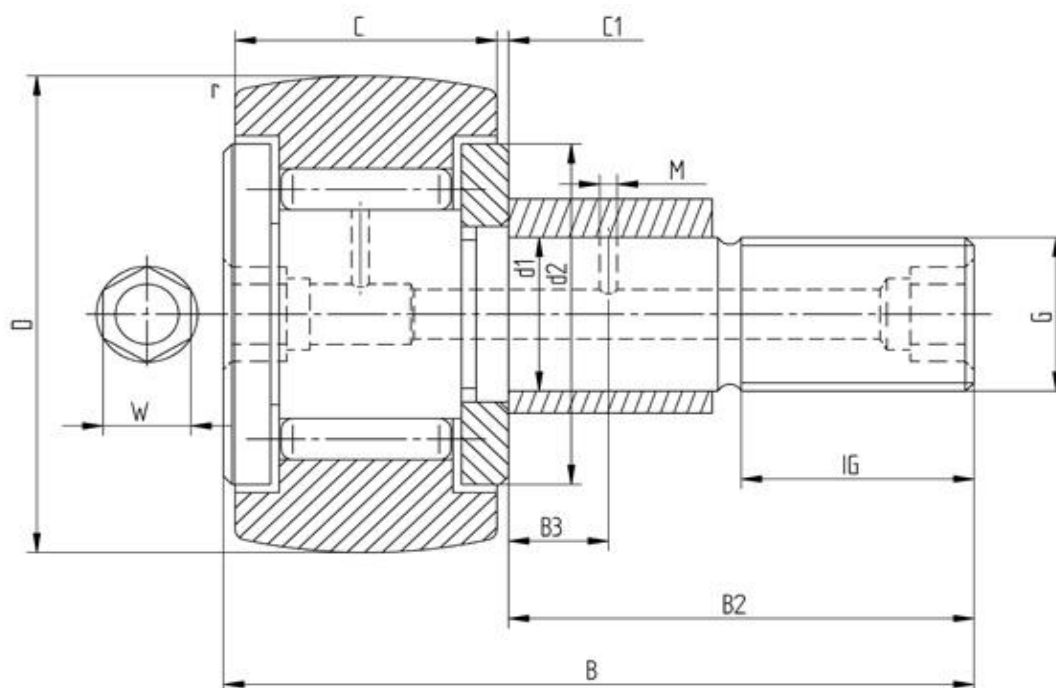


## Data sheet - Cam Follower KRVE32 (full needle, eccentric bush)



| Designation            | KRVE32  |
|------------------------|---------|
| D [mm]                 | 32      |
| d1 [mm]                | 12      |
| B [mm]                 | 40      |
| B2 [mm max.]           | 25      |
| B3 [mm]                | 6       |
| C [mm]                 | 14      |
| C1 [mm]                | 0,6     |
| r [mm]                 | 0,6     |
| d2 [mm]                | 23      |
| M [mm]                 | 3       |
| G                      | M12x1,5 |
| IG [mm]                | 13      |
| W [mm]                 | 6       |
| Eccentric bush de [mm] | 15      |
| Eccentric bush Be [mm] | 11      |
| Eccentric bush e [mm]  | 0,5     |
| Dynamic load Crw [N]   | 10000   |
| Static load C0rw [N]   | 15800   |
| Speed limit [min-1]    | 4500    |

Every specification has been edited and verified carefully. STI Bearings GmbH assumes no liability for potential errors or incompleteness. Technical modifications are subject of changes.  
 © 2020 by STI Bearings GmbH  
 Reproduction, even excerpts, only with our approval.