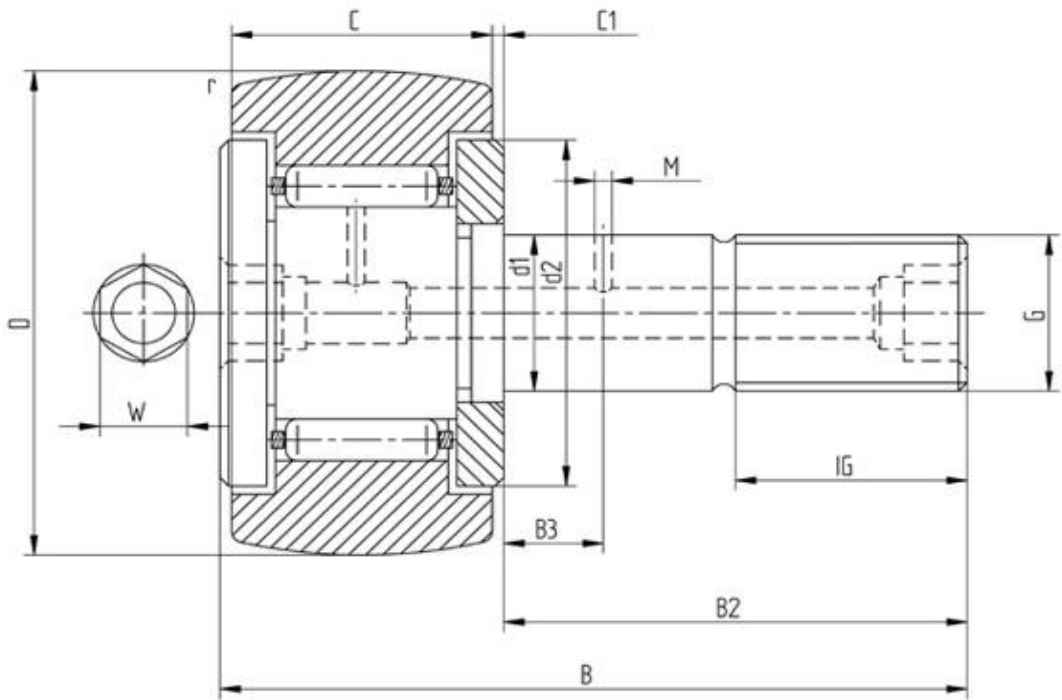


Data sheet - Cam Follower KR85 (with cage)



| Designation | KR85 |
|-------------------------|---------|
| D [mm] | 85 |
| d1 [mm] | 30 |
| B [mm] | 100 |
| B2 [mm max.] | 63 |
| B3 [mm] | 15 |
| C [mm] | 35 |
| C1 [mm] | 1 |
| r [mm] | 1,1 |
| d2 [mm] | 53 |
| M [mm] | 4 |
| G | M30x1,5 |
| IG [mm] | 32 |
| W [mm] | 8 |
| Eccentric bush de [mm - | |
| Eccentric bush Be [mm - | |
| Eccentric bush e [mm] - | |
| Dynamic load Crw [N] | 40500 |
| Static load C0rw [N] | 80000 |
| Speed limit [min-1] | 2600 |

Every specification has been edited and verified carefully. STI Bearings GmbH assumes no liability for potential errors or incompleteness. Technical modifications are subject of changes.
 © 2020 by STI Bearings GmbH
 Reproduction, even excerpts, only with our approval.